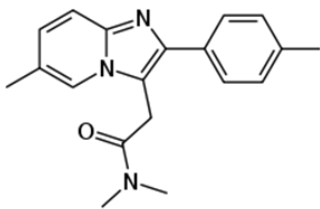


Zolpidem

Homogeneous Enzyme Immunoassay (HEIA™)

IMMUNALYSIS



Formula: C₁₉H₂₁N₃O

Systematic Name: N,N,6-Trimethyl-2-(4-methylphenyl)-imidazo(1,2-a)pyridine-3-acetamide

Brand Names: Adormix, Ambien®, Ambien CR®, Edluar®, Damixan, Hypnogen, Ivedal, Lioran, Nytamel, Sanval, Stilnoct, Stilnox, Stilnox CR, Sucedal, Zoldem, Zolnod and Zolpихexal.

About Zolpidem: Zolpidem is a short-acting nonbenzodiazepine hypnotic used for short term treatment of insomnia as well as brain disorders. Zolpidem is also used off-label to treat restless leg syndrome and as an antiemetic.

Zolpidem and other sedative hypnotic drugs are detected frequently in cases of people suspected of driving under the influence of drugs. Many drivers have high blood levels far exceeding the therapeutic dose range suggesting a high degree of excessive use.¹

Administration: Tablet

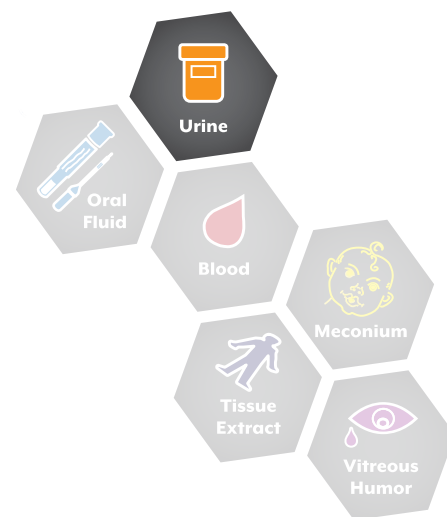
Elimination: Zolpidem has a rapid absorption and short elimination half-life ($T_{1/2} = 1.4 - 4.5$ h).²

Abuse Potential: Zolpidem has potential for medical misuse and addiction, as well as recreational use to achieve a high.³ When used recreationally it may be consumed through insufflation or injection. Users report decreased anxiety, mild euphoria, perceptual changes, visual distortions, and hallucinations. Zolpidem is also often used to “come down” after the use of stimulants such as Amphetamine, Methamphetamine, Cocaine and MDMA.⁴ Zolpidem Tartrate is classified as a Schedule IV controlled substance by federal regulation.

Exclusively
from Immunalysis

Accurate and reliable

Ready to use



1. Jones AW, Holmgren A, Kugelberg FC (2007). “Concentrations of scheduled prescription drugs in blood of impaired drivers: considerations for interpreting the results”. *Therapeutic Drug Monitoring* 29 (2): 248–60.
2. R.C. Baselt and R.H. Cravey, Disposition of Toxic Drugs and Chemicals in Man, 8th edition. 1673-1675
3. Griffiths RR, Johnson MW (2005). “Relative abuse liability of hypnotic drugs: a conceptual framework and algorithm for differentiating among compounds”. *J Clin Psychiatry* 66 Suppl 9: 31–41.
4. Evidente VG, Caviness JN, Adler CH (2003). “Case studies in movement disorders”. *Seminars in Neurology* 23 (3): 277–84.

Ambien® and Ambien CR® are registered trademarks of Sanofi-Aventis U.S. Edluar® is a registered trademark of Meda Pharmaceuticals.



Zolpidem (HEIA™)



Assay Specifications

Methodology: Homogeneous Enzyme Immunoassay

Cutoff: 20 ng/mL

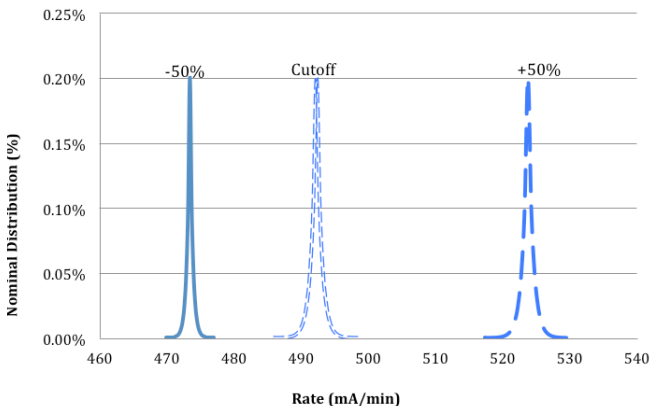
Calibration Range: 0-40 ng/mL

Cross-Reactivity

Analyte	Analyte Concentration (ng/mL)	Zolpidem Equivalent (ng/mL)	Cross-Reactivity (%)
Zaleplon	10,000	20	ND
Zopiclone	10,000	20	ND
Zolpidem Phenyl-carboxylic acid	110,000	20	0.02

ND = None Detected

Overlap: Zolpidem (20 ng/mL Cutoff)



LC-MS Confirmation (10 ng/mL)

		Positive	Negative
HEIA (20 ng/mL)	Positive	25	4
	Negative	0	12

ORDER - Zolpidem (HEIA)

Catalog #	Description
333-0025 / -0100 / -0500	25 mL / 100 mL / 500 mL Kit
C333-10-1	20 ng/mL Calibrator
C333-10-2	10 and 40 ng/mL Controls
Neg-10-1	10 mL Negative Urine Control

Qualitative Precision at 20 ng/mL

Interday Precision (n = 100)			
Concentration (ng/mL)	Rate (Δ mA/min)	SD	CV%
10 Control LOW	0.2701	0.0024	0.9
20 Calibrator	0.2842	0.0025	0.9
40 Control HIGH	0.2976	0.0026	0.9